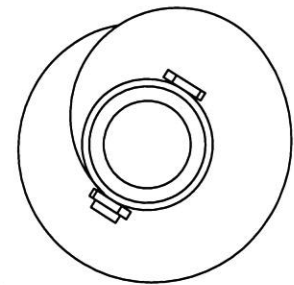
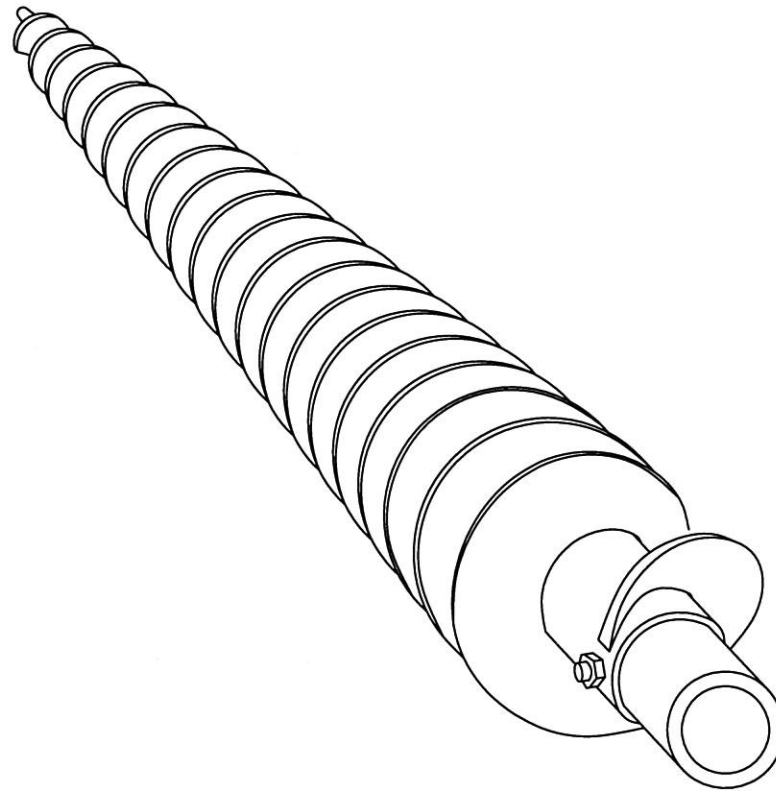


**REF A**  
NOT CUT

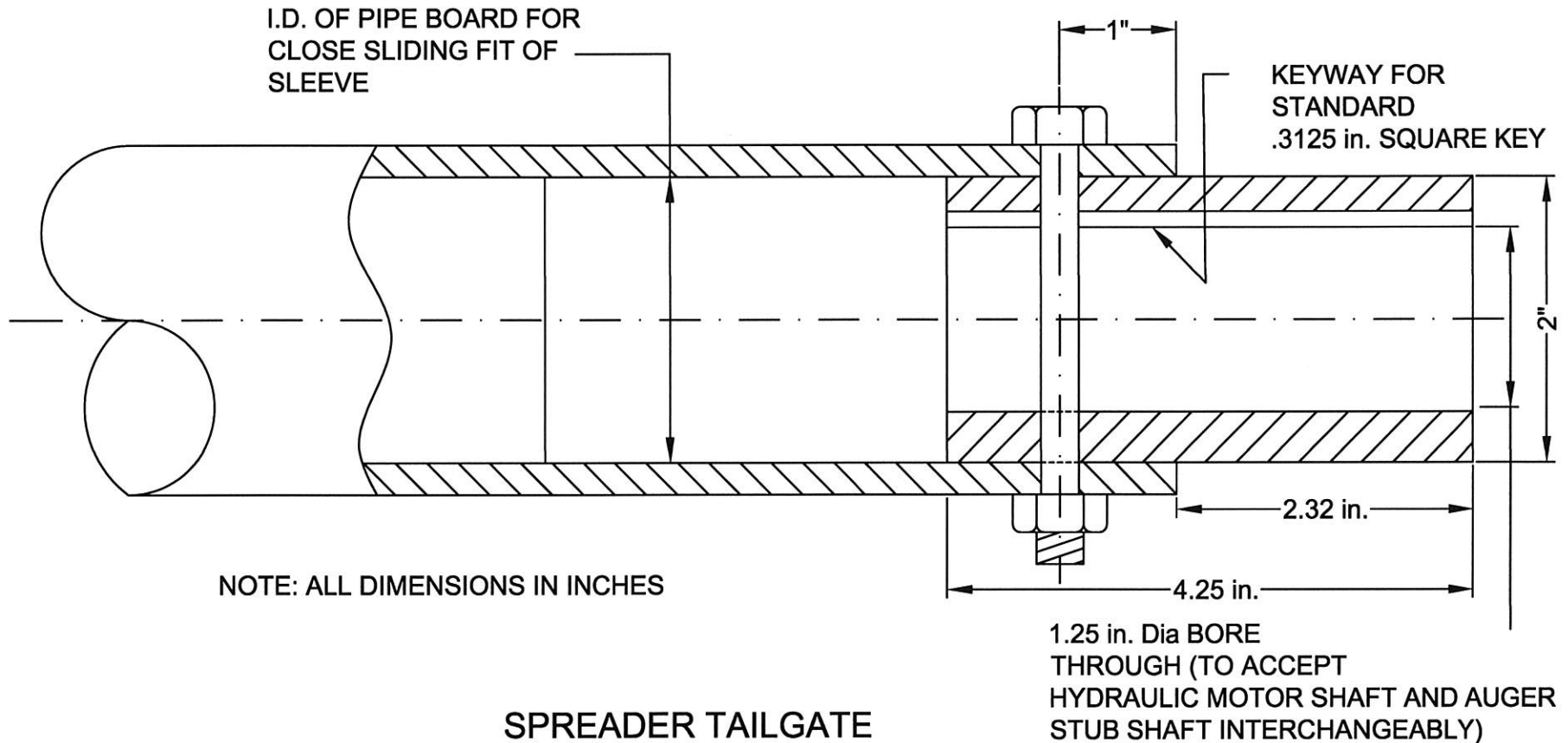


**REF B**  
BEVEL CUT ON MOTOR  
SIDE OF AUGER

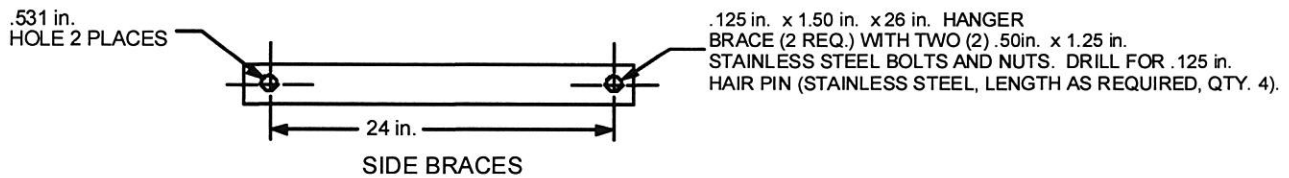
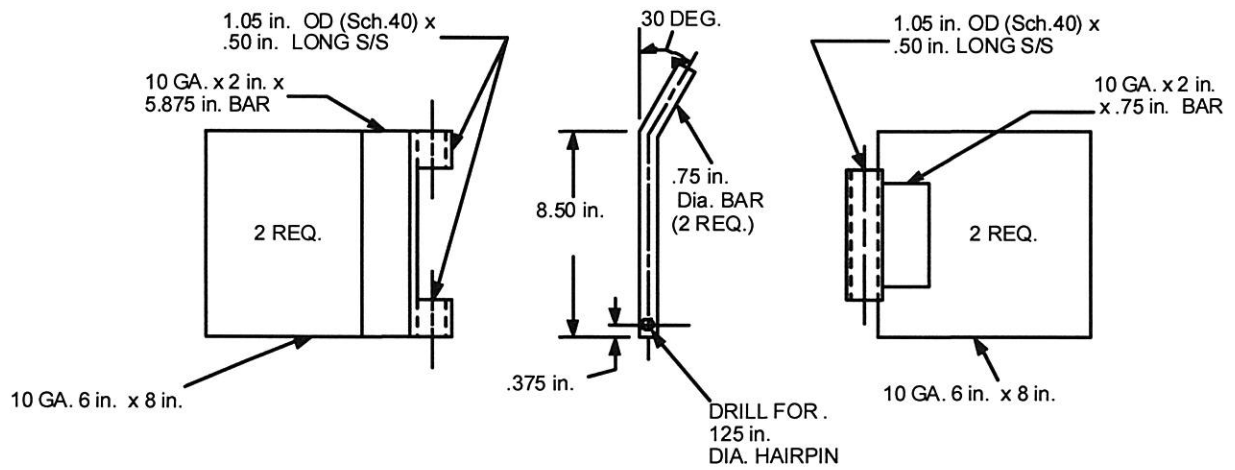
**PA DEPARTMENT OF TRANSPORTATION**

REVISIONS			BEVEL CUT AUGER	
NO.	DATE	BY	DRAWN BY	SCALE
1			HMR	N/A
2				
3			DATE 08-08-17	CHK'D BY

# VIEW SHOWING DRIVE SLEEVE REVERSED FOR DIRECT DRIVE OF 1994 AND UP, STAINLESS AND RUBBER THROUGH SPREADERS

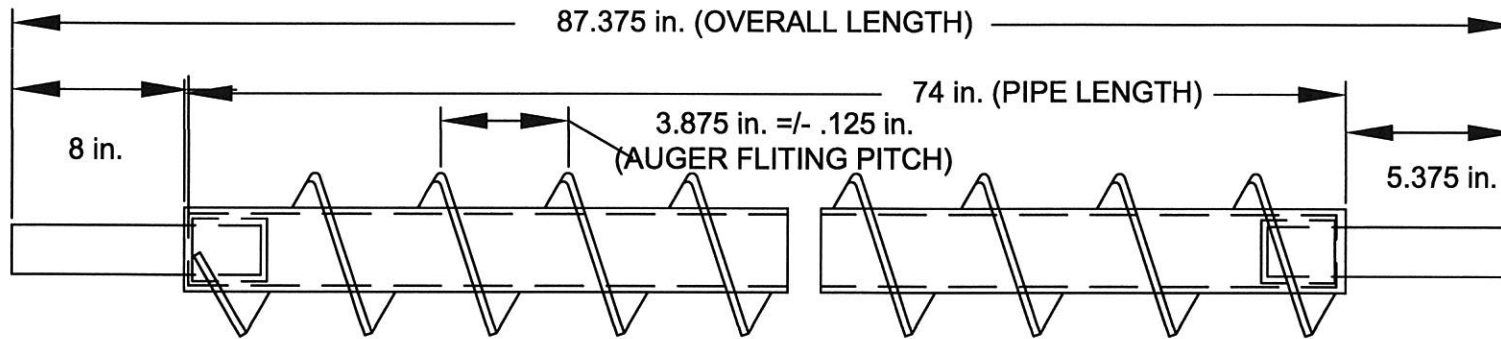


<b>PA DEPARTMENT OF TRANSPORTATION</b>					
<b>REVISIONS</b>			<b>Auger Drive Sleeve Instructions</b>		
NO.	DATE	BY	DRAWN BY	SCALE	EQN-3
1	05-22-02	DWG	DLW	N/A	
2	10-02-06	CJW	DATE	CHKD BY	
3			01-02-98	WHM	SHEET 1 OF 2



- NOTES:  
 1. ALL DIMENSIONS IN INCHES  
 2. MATERIAL OF CONSTRUCTION: STAINLESS STEEL THROUGHOUT, AISI TYPE 304.

REVISIONS			COMMONWEALTH OF PENNSYLVANIA DEPARTMENT OF TRANSPORTATION			
NO.	DATE	BY	QUICK DETACH SPREADER KIT			
1	12/06/93	SLM	DRAWN BY	DLW	SCALE	N/A
2	01/12/96	SWW	CHKD	WHM	DATE	01/05/98
3	01/05/98	DLW			MATERIAL	
4	05/23/02	DWG			DRW NO.	EQN-3A
5					SHEET 1 OF 1	



HELICOID FLIGHT (RIGHT HAND)  
 SINGLE CONTINUOUS SCREW TYPE  
 (BAR SIZE, BEFORE ROLLING, TO BE SUCH THAT FLITING O.D. IS AS SHOWN IN END VIEW AT RIGHT, AND OUTER EDGE THICKNESS IS AS SHOWN IN FLITING THICKNESS SPECIFICATION)

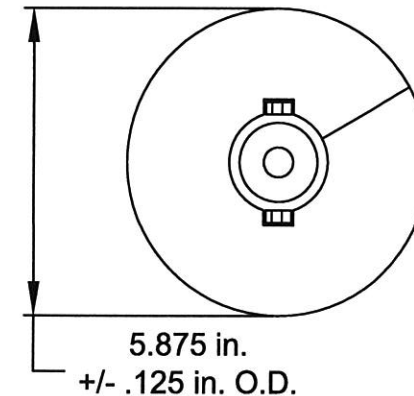
VIEW SHOWING COMPLETE AUGER WELDMENT

2 in. (2.375 O.D.)  
 SCHEDULE 80 (.20 in. WALL)  
 CARBON STEEL PIPE  
 (PIPE SIZE E.R.W. TUBING ACCEPTABLE)

SPECIFICATION NOTES

1. PIPE PORTIONED WORTH (WITH WELDED FITTING) TO BE STRAIGHT TO GIVE MAXIMUM OF .20 IN. TOTAL RUNOUT
2. BOTH STUB SHAFT CENTERLINES TO LIE ON PIPE CENTERLINE TO GIVE MAXIMUM OF .20 IN. TOTAL RUNOUT
3. ALL SURFACES OF SLEEVE, SHAFT, AND OTHER PIPE WHICH MAKE CONTACT WITH EACH OTHER TO BE COATED WITH ANTI-SEIZE COMPOUND
4. SHAFT IS REMOVED, AND NOT USED. WHEN AUGER IS USED IN A DIRECT DRIVE APPLICATION

DO NOT SCALE DRAWING TOLERANCES (UNLESS OTHERWISE NOTED)	
FLAME CUTTING, NIBBLING & WELDING	+/- .060
SHEARING & FORMING	+/- .030
PUNCHING	+/- .020
HOLE DIAMETERS	+ .015/- .005
ANGLES	+/- 2 DEG
DECIMAL MACHINING	0.0- +/- .040
	0.00- +/- .020
	0.000- +/- .005
IMPLIED TOLERANCES DO NOT APPLY TO REFERENCE DIMENSIONS	



PA DEPARTMENT OF TRANSPORTATION							
REVISIONS			PennDOT SPREADER AUGER DETAIL (S/S & RUBBER THOUGH)				
NO.	DATE	BY	DRAWN BY	DLW	SCALE	N/A	EQN-6
1	01-09-98	DLW					
2	05-28-02	DWG					
3	9-14-07	BAG	DATE	01-09-98	CHKD BY	WHM	SHEET 1 OF 3